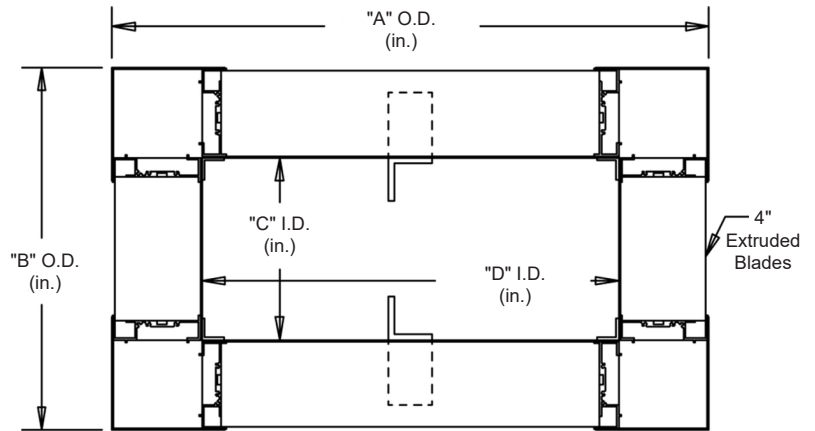
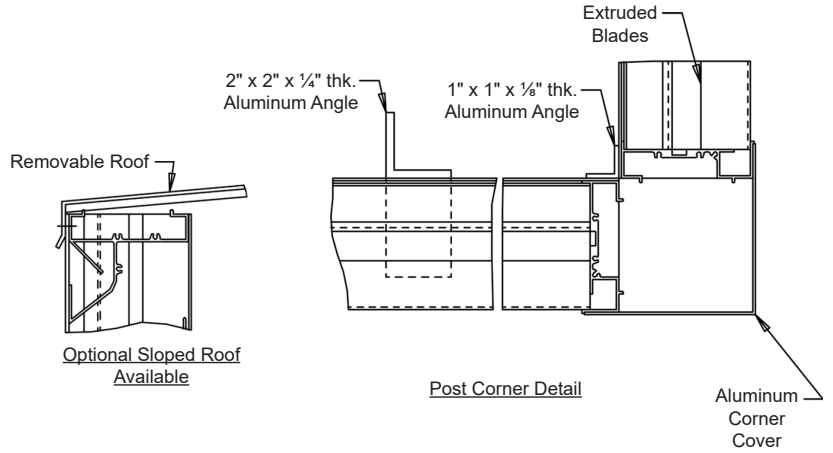
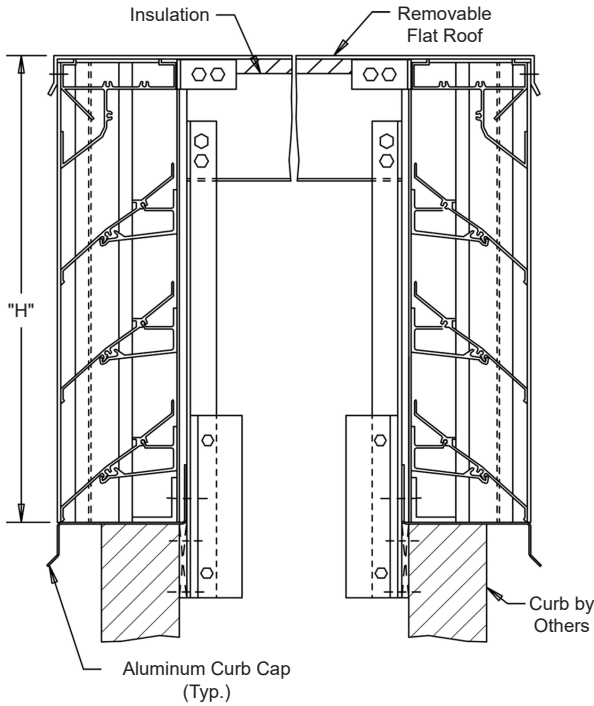


## Interior Fastening Installation

**ANGLES** - All corners and intermediate to extend from roof into curb.



Continuous angle at the four corners and intermediate as required.

## SPECIFICATIONS

**MATERIAL:** .081" thick (nominal) or .125" thick (nominal) extruded aluminum, 6063-T52/T6 alloy, with reinforcing rib bosses.

**ROOF:** .060" thick (nominal) sheet aluminum removable roof, reinforced with aluminum bracing where required to take a snow load of 40 lbs./sq.ft., plus a required safety factor.

**SCREENS:** (When indicated)  
Bird Screen - 1/2" square mesh, 19 GA. galvanized steel, on interior.

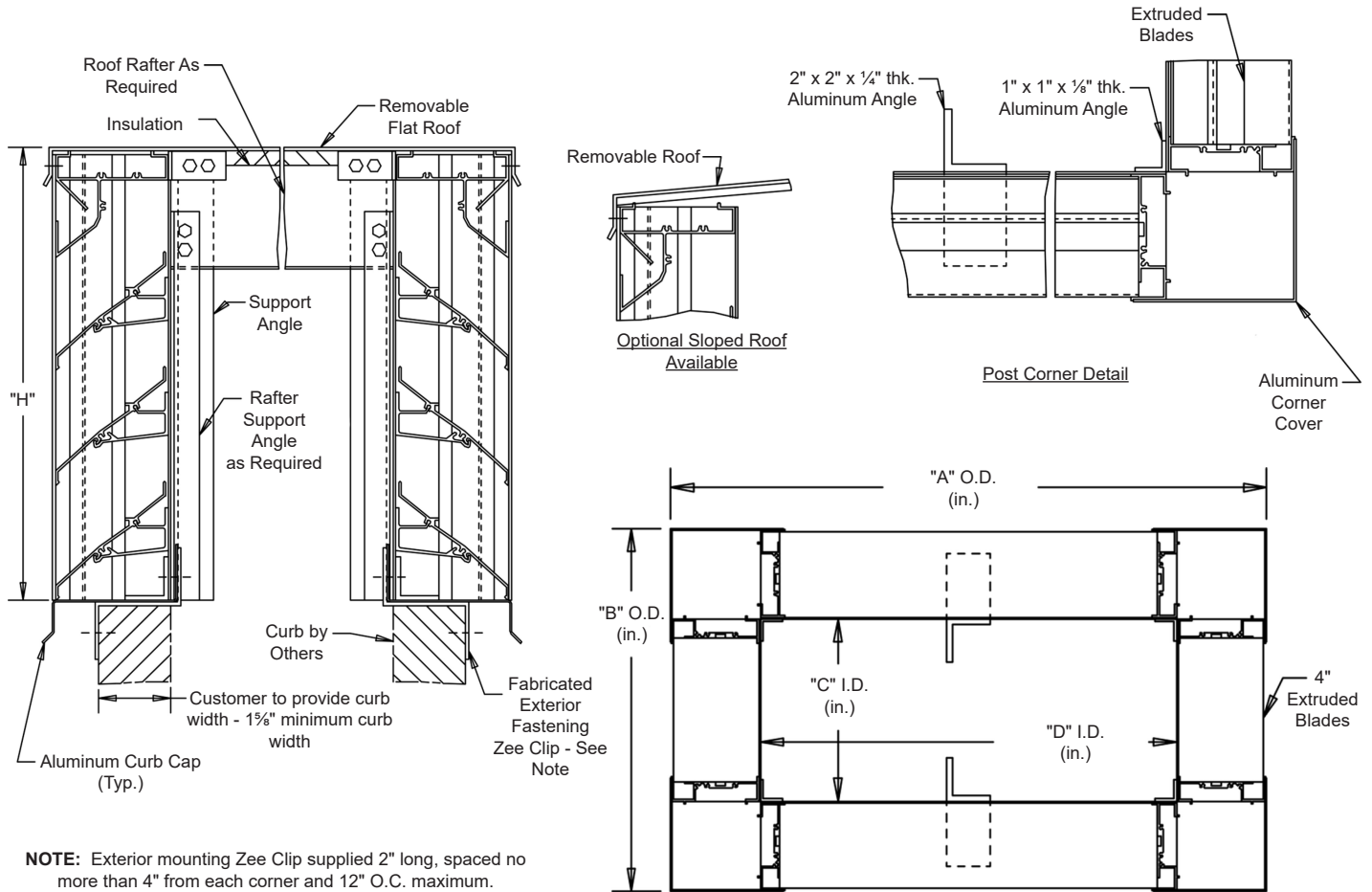
**INSULATION:** Underside of roof is lined with 1/2" thick insulation.

**NOTES:** Penthouse dimensions "A" or "B" exceeding 84" shall be shipped in sections for field assembly by others.

| Item #                      | Qty | A | B | C | D | H            | Mullion | Type           | Location |             |                   |
|-----------------------------|-----|---|---|---|---|--------------|---------|----------------|----------|-------------|-------------------|
| <b>Penthouse Dimensions</b> |     |   |   |   |   |              |         | <b>Screens</b> |          |             | <b>Union Made</b> |
| <b>Arch. / Eng. :</b>       |     |   |   |   |   | <b>EDR:</b>  |         | <b>ECN:</b>    |          | <b>Job:</b> |                   |
| <b>Contractor:</b>          |     |   |   |   |   |              |         |                |          |             |                   |
| <b>Project:</b>             |     |   |   |   |   | <b>Date:</b> |         | <b>DWN:</b>    |          | <b>DWG:</b> |                   |

In the interest of product development, Louvers & Dampers reserves the right to make changes without notice.

## Exterior Fastening Installation



Continuous angle at the four corners and intermediate as required.

## SPECIFICATIONS

**MATERIAL:** .081" thick (nominal) or .125" thick (nominal) extruded aluminum, 6063-T52/T6 alloy, with reinforcing rib bosses.

**ROOF:** .060" thick (nominal) sheet aluminum removable roof, reinforced with aluminum bracing where required to take a snow load of 40 lbs./sq.ft., plus a required safety factor.

**SCREENS:** (When indicated)  
Bird Screen - 1/2" square mesh, 19 GA. galvanized steel, on interior.

**INSULATION:** Underside of roof is lined with 1/2" thick insulation.

**NOTES:** Penthouse dimensions "A" or "B" exceeding 84" shall be shipped in sections for field assembly by others.

| Item #         | Qty | Penthouse Dimensions |   |   |   | Mullion | Screens |          | Union Made |
|----------------|-----|----------------------|---|---|---|---------|---------|----------|------------|
|                |     | A                    | B | C | D |         | Type    | Location |            |
| Arch. / Eng. : |     |                      |   |   |   | EDR:    | ECN:    | Job:     |            |
| Contractor:    |     |                      |   |   |   |         |         |          |            |
| Project:       |     |                      |   |   |   | Date:   | DWN:    | DWG:     |            |